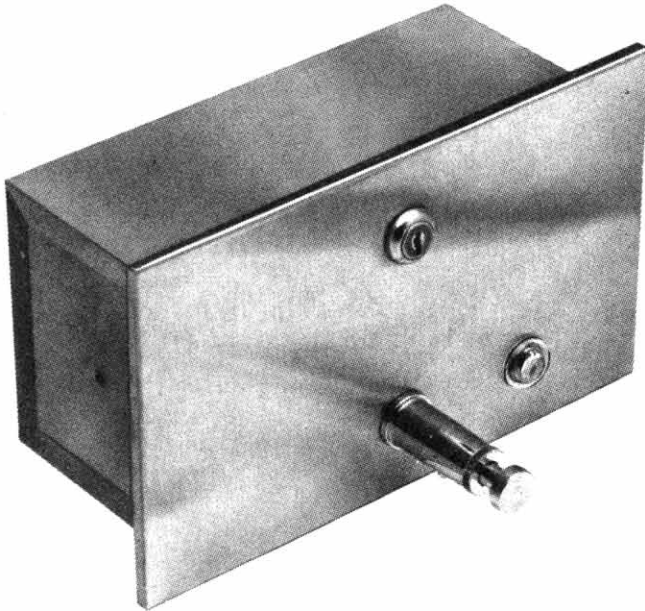


TSM

TUBULAR SPECIALTIES MFG., INC.

13011 S. SPRING ST., LOS ANGELES, CA 90061-1685 • 213/515-4801 TOLL FREE 800/421-2961 CA ONLY 800/521-7548
DESIGNER SERVICE: 7:00 A.M. TO 5:00 P.M. PACIFIC TIME • TELEX II: 910-346-6362 • FAX: 213/217-0653

SD-33, SD-33A



LIQUID, LATHER RECESSED HORIZONTAL SOAP DISPENSERS



DESIGN CONSIDERATIONS

- The SD-33A lather model delivers a rich, creamy soap that provides approximately 30% more hand washings than the SD-33 liquid dispenser. In addition, the lather does not run off the hands, as may occur with straight liquid soaps. Therefore, the SD-33A is the more economical specification.

MODEL NUMBERS (select one)

SD-33—Liquid

SD-33A—Lather



OPERATION

Model SD-33 valve pushes in to dispense liquid soap. Model SD-33A valve pushes in to dispense liquid soap in lather form. If necessary, valve may be primed by holding finger over spout during outward stroke until soap flows smoothly. Integral check valve controls soap flow. Refill window indicates when soap level is low. For best performance, use vegetable-base soap with a 10-20% soap concentration.



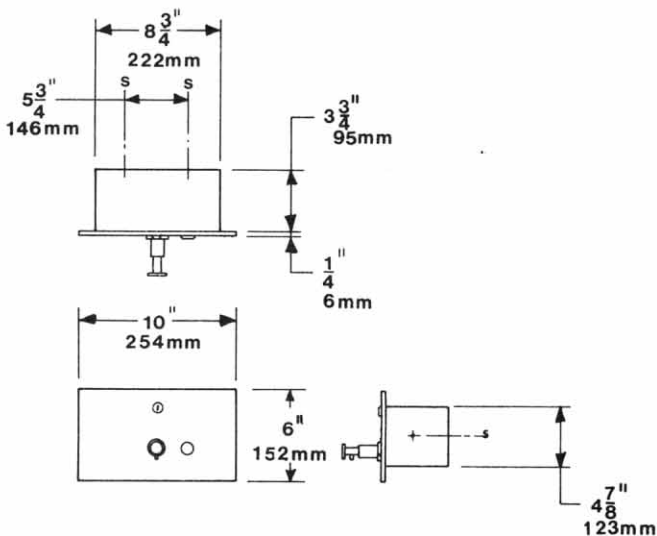
SUGGESTED ARCHITECTURAL SPECIFICATION

TSM model _____ (SD-33 Liquid or SD-33A Lather) Recessed Horizontal Soap Dispenser from Tubular Specialties Manufacturing, Inc., Los Angeles, California, (213) 515-4801. Body and Face Plate: stainless steel; face plate secured to body with tumbler lock. Finish: Satin. Capacity: 50 ounces (1.5 liters). Manufacturer's name is not shown on any exposed surface.



MATERIALS/WORKMANSHIP

Face Plate—Stainless steel 22 gauge (0.8mm). Door is one piece, returning 1/4" (6mm) to wall. Equipped with pin tumbler cylinder lock.



GUARANTEED PRODUCT

SEE PAGE 3 FOR COMPLETE DETAILS

Frame and Mounting Box—Stainless steel 22 gauge (0.8mm).
Soap Reservoir—Stainless steel, heliarc welded. Tank is removable for servicing and cleaning. Capacity: 50 ounces (1.5 liters).
Valve—Triple chrome-plated, high polished brass housing with stainless steel mechanism.



INSTALLATION

Provide framed wall opening of 9" (229mm) wide x 5" (127mm) high with a depth allowance of 4" (102mm). Avoid pipes, vents and

conduits previously installed in the wall. After installing shims as required to give a solid base, complete installation using screws provided by manufacturer.



DISTRIBUTION

TSM maintains a worldwide network of distributors. Call your sales representative listed in Reference Section O for the names of those nearest you.